

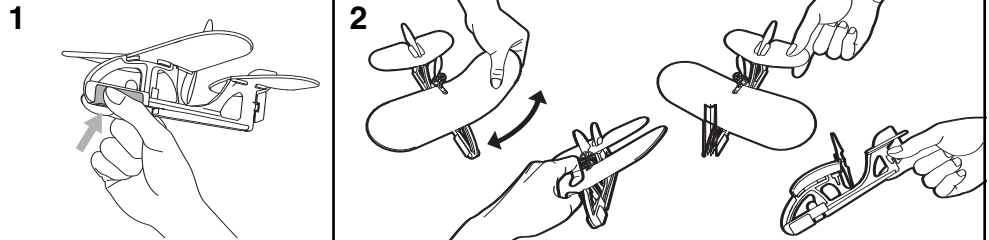
Check to make sure contents are complete:

- 1 Air Hogs® Aerosoar™
- 1 Charger/Controller
- 1 Hanging Hook
- 1 Instruction Sheet

HOW TO HANDLE YOUR AEROSOAR™

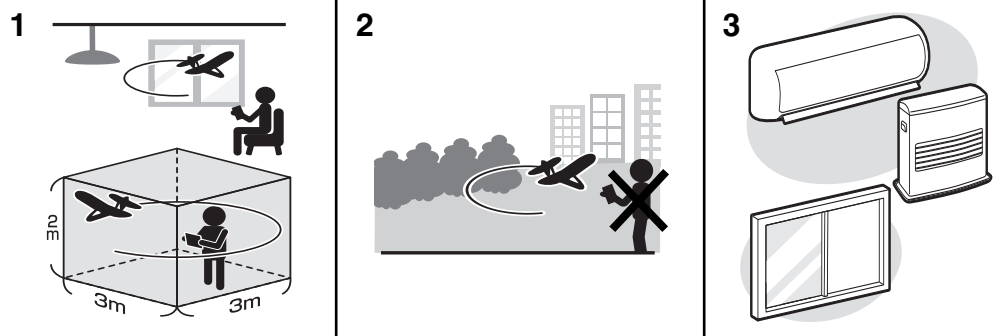
Your Aerosoar™ is a revolutionary, ultra light, indoor RC plane. Since it's such a light plane, it needs to be handled with care. Do not pick up, or hold your plane by the wings. Handle as shown.

1. Pick up the plane by the fuselage as shown in the picture.
2. Do not hold any other parts as the body and wings are very fragile. Do not grab or bend your plane.



WHERE TO FLY

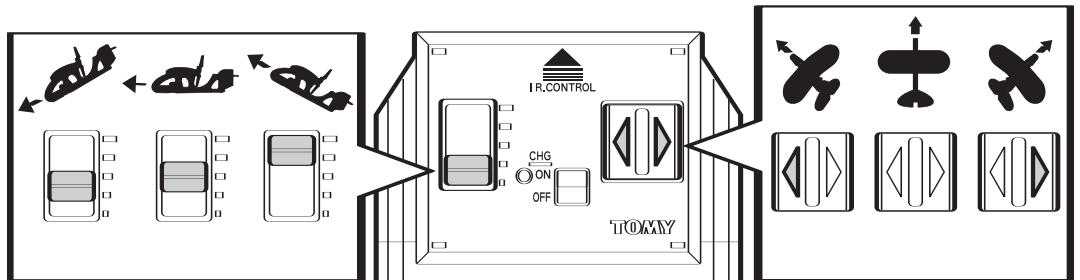
1. The Aerosoar™ is an indoor flyer only, which requires a space of at least 3m x 3m x 2m to control correctly. For your first flight, find the biggest room you can to practice flying.
2. DO NOT FLY OUTDOORS.
3. For optimal flying, it is best to close any windows or turn off any air conditioners or fans that may interfere with the flight.



HOW TO OPERATE

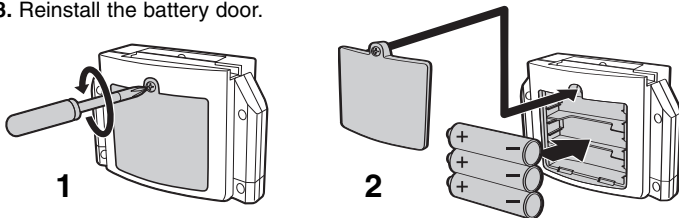
Follow the pictures shown for instructions on how to operate your Aerosoar™.

1. Use the up/down switch to control the forward direction of the plane.
2. Use the left/right switch to control the direction in which you want the plane to turn.



BATTERY INSTALLATION

1. Use a Philips screwdriver to remove the battery door.
2. Install three AA alkaline batteries (not included) in the battery compartment. Be careful to align the positive (+) and negative (-) polarities with the corresponding markings inside the battery compartment.
3. Reinstall the battery door.

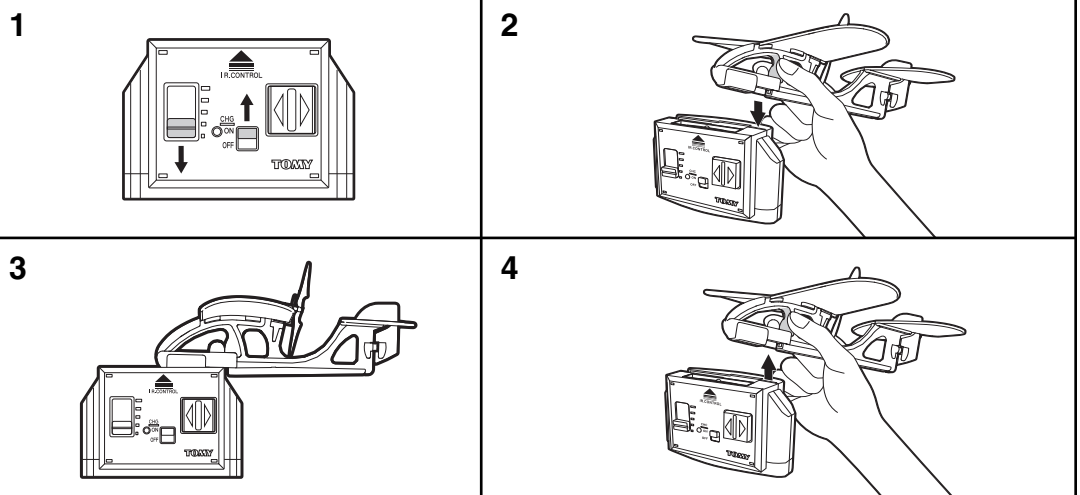


IMPORTANT BATTERY INFORMATION

- Battery installation should be performed by an adult.
- Use only batteries recommended. Be careful to install the batteries with the correct polarity, as indicated.
 - Do NOT mix different types of batteries or old or new batteries.
 - Do NOT mix alkaline, standard, or rechargeable batteries.
 - Do NOT attempt to charge non-rechargeable batteries.
 - Do NOT short circuit the supply terminals.
 - Exhausted batteries are to be removed, as they will adversely affect the performance.
 - Only use charger supplied with this package.
 - Do NOT use any other source to charge your Aerosoar™.

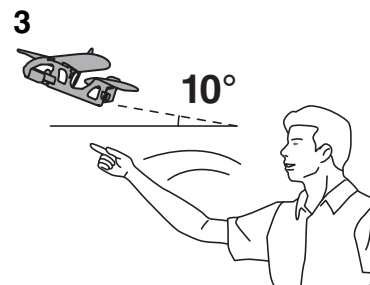
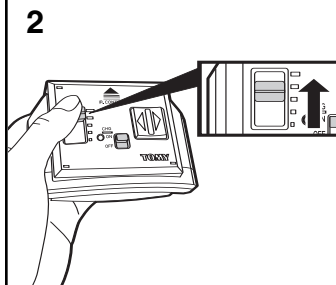
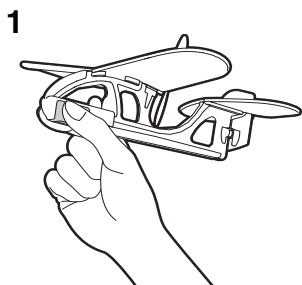
HOW TO CHARGE

The Aerosoar™ charges up in approximately 40-60 seconds. Place the plane onto the charging terminal as shown and turn the controller on. The red Power and Charging Indicator will flash during the charging process. It will turn off once it is done and you will hear a series of beeps indicating that it is ready to go. Aerosoar™ holds its charge for a few minutes. It is best to fly it right after charging.



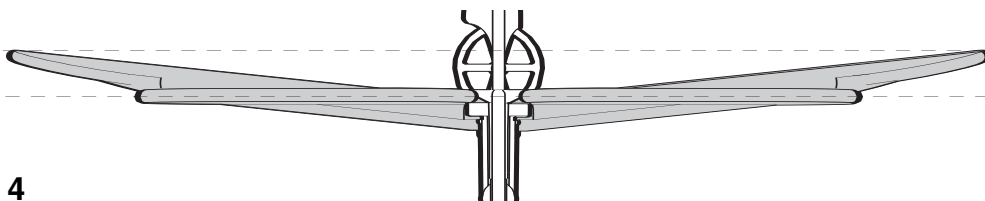
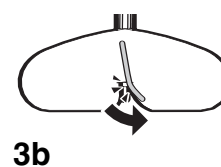
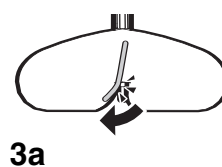
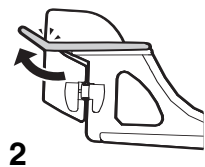
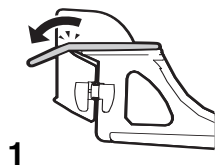
HOW TO TOSS

1. Hold the bottom of the fuselage as shown.
2. Slightly shift the power control lever up to start the propellers on the plane.
3. Gently toss the Aerosoar™ directly in front of you in a slightly upward motion. (It helps to toss from as high as you can hold it up).



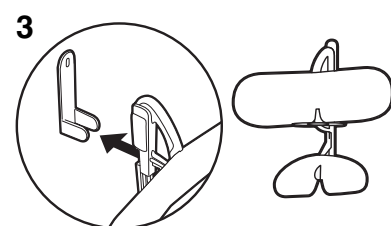
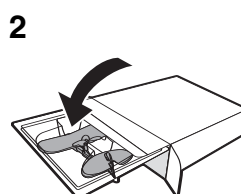
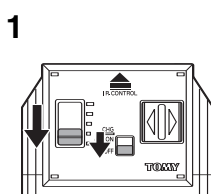
ADJUSTING THE AIRFRAME

1. If you find that your plane continually wants to fly forward in an upward motion, **gently** bend the backside of the elevator downward.
2. If you find that your plane continually wants to fly forward in a downward motion, **gently** bend the backside of the elevator upward.
3. When the plane turns right or left without going straight, **gently** bend the vertical tail wing/rudder to the left/right. When the plane turns right, turn the tail to the left (a). When the plane turns left, turn the tail to the right (b).
4. Hold your plane at eye level and check that both the wing and tail are parallel. Gently adjust if needed.



CARING FOR YOUR AEROSOAR™

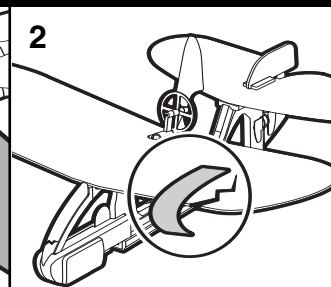
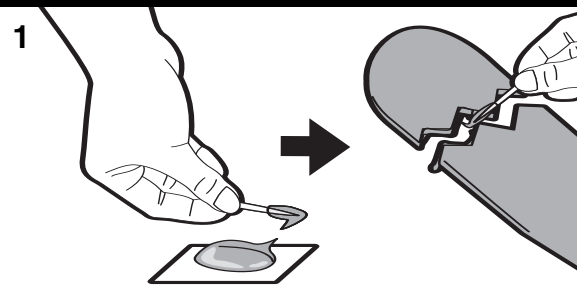
1. Shift power control lever down and turn off the controller whenever it is not in use.
 2. Put your Aerosoar™ in a safe place where it will not be damaged.
 3. You can also hang the Aerosoar™ using the hanging hook.
- NOTE:**
- Do not get your Aerosoar™ wet.
 - Do not leave it near a heater or store it in a hot or damp place.
 - Do not fold or bend your Aerosoar™.



REPAIRING YOUR AEROSOAR™

If you happen to crash or damage your Aerosoar™, it can be modified by slight adjustment or repair. If one of the wings happens to break, you can repair it using the procedure shown.

1. Pick up a little glue with a toothpick.
IMPORTANT: make sure that the glue can be used on polystyrene foam.
Then, put a thin layer of glue on both sides of the wing and correctly put them back together.
2. If you only have a slight crack in your wing, you can repair it by gently putting a piece of tape on the cracked portion.



FCC REQUIREMENTS

This device complies with Part 15 of the FCC Rules. Operation is subject to the following two conditions: (1) this device may not cause harmful interference, and (2) this device must accept any interference received, including interference that may cause undesired operation.

Warning: Adjustment to this unit or replacement of any transmitter component (crystal, semiconductor, etc.) to this unit that could result in a violation of the rules.

Warning: Changes or modifications not expressly approved by the party responsible for compliance could void the user's authority to operate the equipment.

NOTE: This equipment has been tested and found to comply with the limits for a Class B digital device, pursuant to Part 15 of the FCC Rules. These limits are designed to provide reasonable protection against harmful interference in a residential installation. This equipment generates, uses, and can radiate radio frequency energy and, if not installed and used in accordance with the instructions, may cause harmful interference to radio communications. However, there is no guarantee that interference will not occur in a particular installation. If this equipment does cause harmful interference to radio or television reception, which can be determined by turning the equipment off and on, the user is encouraged to try to correct the interference by one or more of the following measures :

- Reorient or relocated the receiving antenna.
- Increase the separation between the equipment and receiver.
- Connect the equipment into an outlet on a circuit different from that to which the receiver is connected.
- Consult the dealer or an experienced radio/TV technician for help.

Shielded cables must be used with this unit to ensure compliance with the Class B FCC limits.